

The

ROCKSPIRIAN

October 2021

Volume 4, Number 45

BETTY JOHNSON has over the years, inspired us all to follow our dreams and to realize how lucky we are to have Rockspire. As she wrote in the October 2013 Rockspirian...

"I am very fortunate to be able to visit Rockspire whenever possible. It is always a beautiful spot; no matter what the season. I love being out in the country with the many trees, huge rock formations, brilliant fall foliage or spring flowers.

The quiet is peaceful, just a sort of humming silence surrounds us. The amazing night sky is crowded with stars. It is a revelation of God's universe.

Rockspire is full of promise and dreams to be realized."

On October 24, 2009, we honored Betty's love of Rockspire by naming the guest cabin, *Betty's Birdhouse*. And now, twelve years later, we are honored by her continued support as we celebrated her **100th** birthday on September 15th. Happy Birthday, Betty!



Betty Johnson at her 100th Birthday Celebration
Photo by M. Johnson 9.11.21

THE FIRST HOMESITES STRUCTURE is a concrete and steel building that will eventually become a two-car garage for the Johnson's home, but for now will serve as the homesite construction office and shop. This means we can base close to the site, and not at the main Rockspire shop which is 1/2 mile away. The roof of this structure will also double as an observation deck, allowing for construction observation with a clear view of the homes on the downslope.



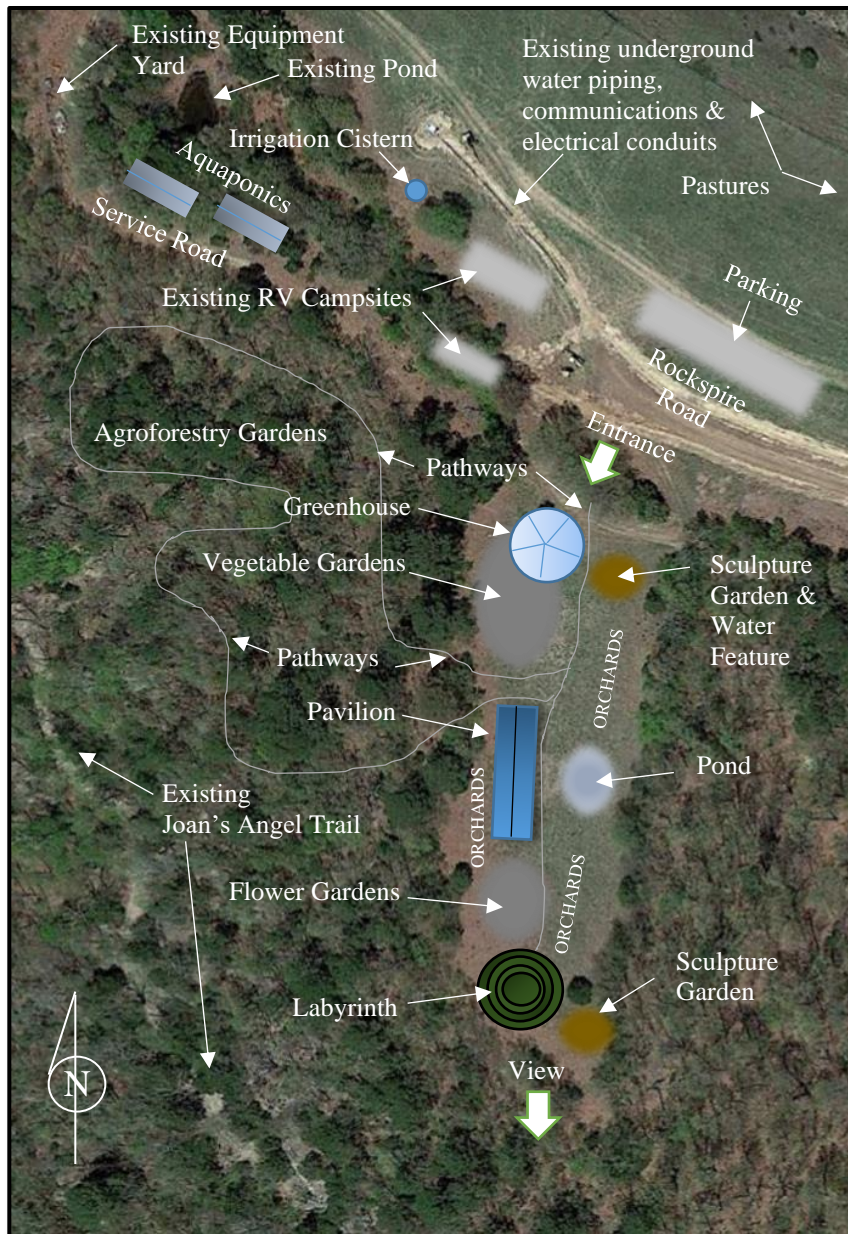
Johnson's Garage Structure at Rockspire Homesites
Photo by G. Myers 10.12.21

Rockspire's architects are also using this structure as a prototype for some of the construction methods being incorporated in the homes. For example, the garage's concrete and steel materials have superior durability and resistance to fire which is important in developing a sustainable housing development.

Construction of the first two homes will follow the clearing, grubbing, and layout happening now. Architects are cautiously optimistic that current nationwide shipping constraints and supply shortages will ease by Spring when construction should be in full stride.



THE ROCKSPIRE AGRICULTURAL CENTER is taking root with the recent adoption of the masterplan shown below, plus initial permaculture orchard plantings beginning this Fall. In addition to providing a fresh food source for Rockspire and surrounding communities, the Center will function as a gardening resource and educational center, and an R&D site under the guidance of Scott Miskiel.



Some of the proposed agricultural concepts being incorporated are:

- Permaculture Orchards
- Restoration Agriculture
- Organic Gardening
- Polyculture Gardening
- Civic Agriculture
- Hugelkultur
- Aquaponics
- Pasture Rotation
- Carbon Capture

And the **Rockspire Agricultural Center** may eventually include:

- A Labyrinth
- Two Sculpture Gardens
- A Greenhouse
- Two Aquaponic Containers
- Raised Vegetable Gardens
- Flower Gardens
- Agroforestry Gardens
- Three Permaculture Orchards
- A Pavilion that could include:
 - Teaching Kitchen
 - Commercial Food preparation Areas
 - Classrooms
 - Outdoor Dining
 - Public Restrooms
- A Natural Spring-fed, Drip-irrigation System and Pond
- Two Three-acre Pastures

All areas of the *Agricultural Center* will be connected through a series of pathways that will link to the existing 2-mile, Joan's Angel Trail.

For more about the **Rockspire Agricultural Center** and related topics, see our website at:

<http://rockspire.com/food-advisory/>

