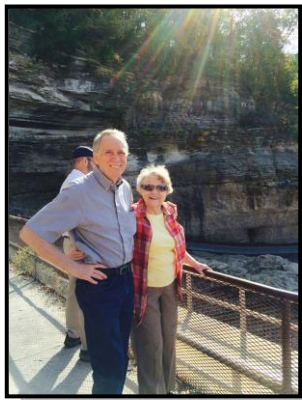




December, 2015  
Volume 2, Number 23

## Merry Christmas from Rockspire!

**AT ROCKSPIRE WE LIKE TO CELEBRATE!** This past year we celebrated several milestone events at Rockspire, such as The Johnson Family Reunion, and the design, construction, and implementation of the Vold Vision mural and staircase, and the Erdman Conference Table.



Mike Johnson and his mother,  
Betty Johnson at the Top of the Rock

This past October, the Johnson Family again gathered at Rockspire to celebrate the 94th birthday of Betty's Birdhouse Cabin's namesake and the family matriarch, Betty Johnson. Highlights of the week-long festivities included visiting Crystal Bridges Museum of American Art in Bentonville, AR and the Top of the Rock at Big Cedar Lodge, MO.

Two weeks later, new visitors to Rockspire, Lucille and Bill Dunn, came to celebrate the peace and beauty of Rockspire and also visit the museum and lodge for the first time. Bill, a model train enthusiast, polished up the old trains George Myers had not touched since he was a child! The trains will add nostalgia to the Christmas festivities at Rockspire.

And at the end of this year, George Myers will be celebrating his retirement from the Erdman Company. As a project architect and design manager he managed over 200 healthcare projects around the country, valued in excess of \$750 million. Now George is ready to move to the next phase in his life – what he calls his third tri-decade. The first tri-decade was focused on education and apprenticeship, followed by a second tri-decade focused on career-building in architecture and real estate development.

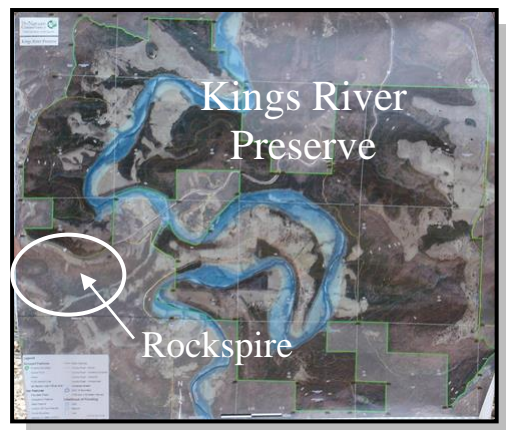


This coming tri-decade will cap his achievements with one special, never-ending project! This project, of course, is Rockspire. Wish him well on his “retirement,” not “from” his latest career but “to” his next special project.

***We hope you celebrate a wonderful holiday season this year, and we look forward to being a part of your celebrations in 2016! The Doors are always open for celebrations at Rockspire.***

*(Editor's note: Look for the “Doors” article in the upcoming April 2016 Rockspirian!)*

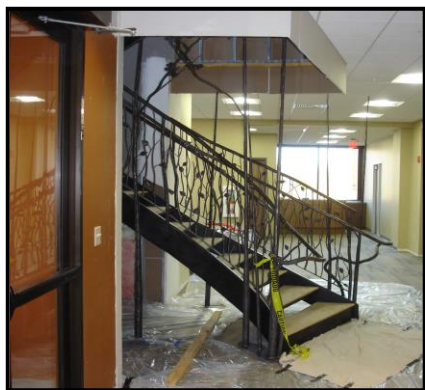
**T**HE KINGS RIVER PRESERVE - Rockspire's closest neighbor, was purchased by the Nature Conservancy in March of 2010. (See the April 2010 *Rockspirian*) Since that time, the preserve has been busy re-foresting areas near the river as well as acquiring more property along the river. A few weeks ago the Conservancy dedicated an additional 700 acres as part of the Kings River Preserve, making the preserve over 5,200 acres!



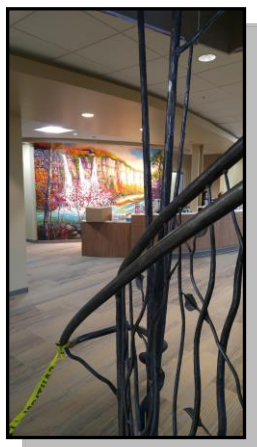
The Conservancy's primary purpose in acquiring the preserve, which spans some seven miles on both sides of the Kings River, was to help maintain the health of and water quality in the Kings River. The Kings River is important because:

- It flows into Table Rock Lake and the White River, meaning it serves as a source of drinking water for dozens of communities in Missouri and Arkansas;
- It is a recreational treasure -- thousands of people come to the Kings River to canoe, fish and swim every year;
- Its watershed is home to 18 fish, crayfish, mussels, turtles and aquatic insects found only in the Ozarks, including a stonefly that lives in the Kings River watershed and nowhere else on Earth;
- The forested areas around the river provide foraging habitat for endangered gray bats and a wide array of other terrestrial animals.

The Kings River is an incredibly scenic place. It's lined with tall bluffs, gravel beds and forested banks. Its waters flow clear and clean. And the Kings River is known as one of the best destinations for prized game fish, notably the smallmouth bass. Belted kingfishers, egrets and herons are common sights, as are bald eagles during winter months.



The Vold Vision Monumental Staircase during installation by David Cunningham of Eureka Ironworks.



View of Mural from Staircase



Paul and Kim O'Neill of Kings River Fine Arts in front of the newly installed Vold Vision Mural in Fayetteville, AR.